

Test Report

No. 021800.039385

Date: April 14, 2009

Page 1 of 3

Jensen Swing Products Inc
 9327 Wheatlands Road
 Santee, CA
 United States 92071

Attn: Charvet Ciruolo

The following sample(s) was/were submitted
 and identified by/on behalf of the client as:

Roto Molded Material
 Color: Red
 Sample/Style # S127

Sample Received Date:

4/13/2009

Testing Period

4/13/2009-4/14/2009

Test Requested:

For compliance with US Public Law 110-314 (HR 4040 'Consumer Product Safety Improvement Act of 2008'), lead in paint/similar surface coating material, lead in accessible substrate materials and phthalates content (where applicable).

Test Results:

Please refer to next page(s).

Results summary:

Test item	Result
Lead in accessible substrate materials	PASS
Phthalates	PASS

Test Results:

See page 2.

Signed for and on behalf of SGS US Testing Co.



 Diane Santino

Manager, Chemistry Laboratory

This document is issued by the Company under its General Conditions of Service accessible at http://www.sgs.com/terms_and_conditions.htm. Attention is drawn to the limitation of liability, indemnification and jurisdiction issues defined therein. Any holder of this document is advised that information contained hereon reflects the Company's findings at the time of its intervention only and within the limits of Client's instructions, if any. The Company's sole responsibility is to its Client and this document does not exonerate parties to a transaction from exercising all their rights and obligations under the transaction documents. Any unauthorized alteration, forgery or falsification of the content or appearance of this document is unlawful and offenders may be prosecuted to the fullest extent of the law.

1) Test Results : Total Lead Content (unit: mg/kg = ppm):

Sample Component Tested	Lead Content (ppm)	MDL	Permissible Limit **	Conclusion
Red Plastic	ND	2 ppm	300 ppm	Pass

** Conclusion is based on the 300 ppm limit requirement, effective August 14, 2009. The requirements for lead in substrate in children's products is summarized below

Scope	Requirement	Effective date
Lead in substrate other than paint / similar surface coating material	≤ 600 ppm	February 10, 2009
	≤ 300 ppm	August 14, 2009
	≤ 100 ppm	August 14, 2011

Note: 1. ND = Not Detected, reported when the reading is less than the detection limit value.

2.) Phthalates

Method: With reference to ASTM D3421-75. Analysis was performed by Gas Chromatography / Mass Spectrometry.

For all Toys and childcare articles

Test item	1	Permissible Limit
Dibutyl Phthalate (DBP)	ND	0.1%
Benzylbutyl Phthalate (BBP)	ND	0.1%
Bis-(2-ethylhexyl) Phthalate (DEHP)	ND	0.1%
Conclusion	PASS	---

For all Toys that can be placed in the mouth and childcare articles

Test item	1	Permissible Limit
Diisononyl Phthalate (DINP)	ND	0.1%
Di-n-octyl Phthalate (DNOP)	0.0014	0.1%
Disodecyl Phthalate (DIDP)	ND	0.1%
Conclusion	PASS	---

This document is issued by the Company under its General Conditions of Service accessible at http://www.sgs.com/terms_and_conditions.htm. Attention is drawn to the limitation of liability, indemnification and jurisdiction issues defined therein. Any holder of this document is advised that information contained hereon reflects the Company's findings at the time of its intervention only and within the limits of Client's instructions, if any. The Company's sole responsibility is to its Client and this document does not exonerate parties to a transaction from exercising all their rights and obligations under the transaction documents. Any unauthorized alteration, forgery or falsification of the content or appearance of this document is unlawful and offenders may be prosecuted to the fullest extent of the law.

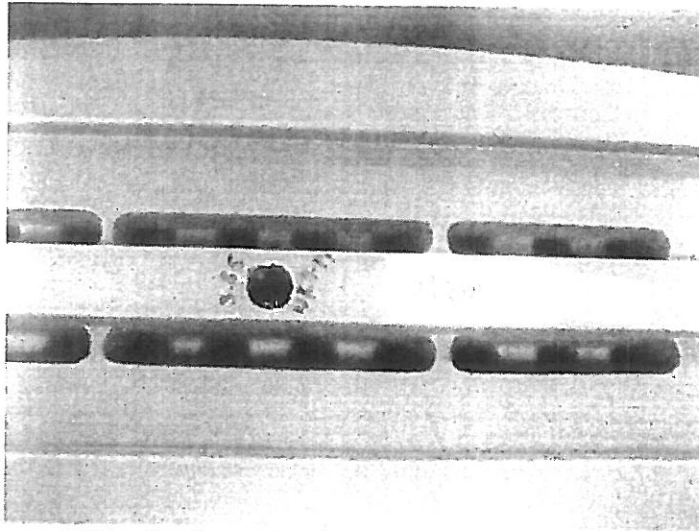
Sample Description :

- 1. Red Plastic

Note:

- 1. % = percentage by weight
- 2. ND = not detected
- 3. Method Detection Limit for each = 0.0005%
- 4. Effective Date = February 10, 2009
- 5. A "children's toy" means a product intended for a child 12 years of age or younger for use when playing, and a "child care article" means a product that a child 3 and younger would use for sleeping, feeding, sucking or teething.

Sample Photo :



SGS authenticates the photo on the original report only

*** End of Report ***

Unless otherwise stated the results shown in this test report refer only to the sample(s) tested and such sample(s) are retained for 90 days only. This document cannot be reproduced except in full without prior approval of the Company

This document is issued by the Company under its General Conditions of Service accessible at [http://www.sgs.com/terms and conditions.htm](http://www.sgs.com/terms_and_conditions.htm). Attention is drawn to the limitation of liability, indemnification and jurisdiction issues defined therein. Any holder of this document is advised that information contained hereon reflects the Company's findings at the time of its intervention only and within the limits of Client's instructions, if any. The Company's sole responsibility is to its Client and this document does not exonerate parties to a transaction from exercising all their rights and obligations under the transaction documents. Any unauthorized alteration, forgery or falsification of the content or appearance of this document is unlawful and offenders may be prosecuted to the fullest extent of the law.