



Test Report

No. 021041:037777

Date: March 26, 2009

Page 1 of 2

Jensen Swing Products Inc
9327 Wheatlands Road
Santee, CA
United States 92071

Attn: Charvet Ciralo

The following sample(s) was/were submitted
and identified by/on behalf of the client as:

Pipe for Frames
Color: Silver
Sample/Style# Pipe

Sample Received Date:

3/17/2009

Testing Period

3/23/2009

Test Requested: To determine the Total Lead Content in the submitted sample(s).

Test Method: With reference to Acid Digestion per EPA 3050B. Analysis was performed by Inductively Coupled Argon Plasma-Atomic Emission Spectrometry (ICP-AES).

Test Results: Please refer to next page(s).

Signed for and on behalf of SGS US Testing Co.

Diane Santino
Manager, Chemistry Laboratory

This document is issued by the Company under its General Conditions of Service accessible at http://www.sgs.com/terms_and_conditions.htm. Attention is drawn to the limitation of liability, indemnification and jurisdiction issues defined therein. Any holder of this document is advised that information contained hereon reflects the Company's findings at the time of its intervention only and within the limits of Client's instructions, if any. The Company's sole responsibility is to its Client and this document does not exonerate parties to a transaction from exercising all their rights and obligations under the transaction documents. Any unauthorized alteration, forgery or falsification of the content or appearance of this document is unlawful and offenders may be prosecuted to the fullest extent of the law.

Test Report

No. 021041:037777

Date: March 26, 2009

Page 2 of 2

Test Results : Total Lead Content (unit: mg/kg = ppm):

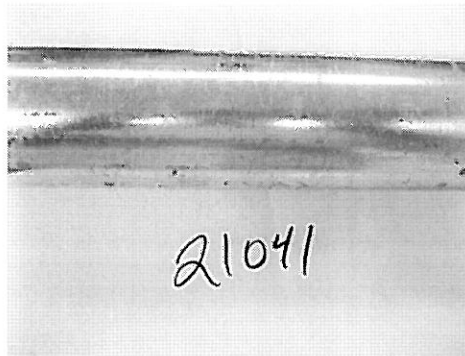
Sample Component Tested	Lead Content (ppm)	MDL	Permissible Limit **	Conclusion
Metal Pipe	ND	2 ppm	300 ppm	Pass

** Conclusion is based on the 300 ppm limit requirement, effective August 14, 2009. The requirements for lead in substrate in children's products is summarized below:

Scope	Requirement	Effective date
Lead in substrate other than paint / similar surface coating material	≤ 600 ppm	February 10, 2009
	≤ 300 ppm	August 14, 2009
	≤ 100 ppm	August 14, 2011

Note: 1. ND = Not Detected, reported when the reading is less than the detection limit value.

Sample Photo :



SGS authenticates the photo on the original report only

*** End of Report ***

Unless otherwise stated the results shown in this test report refer only to the sample(s) tested and such sample(s) are retained for 30 days only. This document cannot be reproduced except in full, without prior approval of the Company.

This document is issued by the Company under its General Conditions of Service accessible at http://www.sgs.com/terms_and_conditions.htm. Attention is drawn to the limitation of liability, indemnification and jurisdiction issues defined therein. Any holder of this document is advised that information contained hereon reflects the Company's findings at the time of its intervention only and within the limits of Client's instructions, if any. The Company's sole responsibility is to its Client and this document does not exonerate parties to a transaction from exercising all their rights and obligations under the transaction documents. Any unauthorized alteration, forgery or falsification of the content or appearance of this document is unlawful and offenders may be prosecuted to the fullest extent of the law.