



# Test Report

No. : KC/2011/C0158 Date : 2011/12/27 Page : 1 of 3

I-FUII ENTERPRISE CO., LTD.

NO. 59, LANE 202, SEC. 3, CHANG NAN ROAD, CHANG HUA CITY, TAIWAN (500)



The following sample(s) was/were submitted and identified by/on behalf of the client as :

Sample Description : SMALL TRIANGE FOR S130/S115  
 Style/Item No. : TRIANGE FOR S130  
 Sample Receiving Date : 2011/12/22  
 Testing Period : 2011/12/22 TO 2011/12/27  
 Sample Submitted By : I-FUII ENTERPRISE CO., LTD.

**Test Requested** : As specified by client, selected parts of the submitted sample(s) for compliance with Public Law 110-314 (Consumer Product Safety Improvement Act of 2008, CPSIA):

(1) Lead in accessible substrate materials

**Test Result(s)** : Please refer to next page(s).

**Summary** :

Test Parameter	Conclusion
Lead in accessible substrate materials	PASS

  
 Ray Chang / Asst. Manager  
 Signed for and on behalf of  
 SGS Taiwan Limited





# Test Report

No. : KC/2011/C0158 Date : 2011/12/27 Page : 2 of 3

I-FUII ENTERPRISE CO., LTD.  
NO. 59, LANE 202, SEC. 3, CHANG NAN ROAD, CHANG HUA CITY, TAIWAN (500)



## Test Result(s)

PART NAME NO.1 : SILVER SMALL TRIANGE FOR S130/S115

### (1) Lead in accessible substrate materials

Test Item(s)	Unit	Method	MDL	Result	Permissible Limit
				NO.1	
Lead (Pb)	mg/kg	As per CPSC-CH-E1001-08 method.	2	8.57	100 Note(#2)
Comment				PASS	-

### Note :

1. mg/kg = ppm; 0.1wt% = 1000ppm
2. n.d. = Not Detected
3. MDL = Method Detection Limit
4. " - " = Not Regulated
5. (#2) Paint: 600mg/kg before 2009.08.14  
90mg/kg after 2009.08.13  
Non-paint: 600mg/kg in 2009.02.10 ~ 2009.08.13  
300mg/kg in 2009.08.14 ~ 2011.08.13  
100mg/kg after 2011.08.13

Unless otherwise stated the results shown in this test report refer only to the sample(s) tested. This test report cannot be reproduced, except in full, without prior written permission of the Company. 除非另有說明，此報告結果僅對測試之樣品負責。本報告未經本公司書面許可，不可部分複製。  
This document is issued by the Company subject to its General Conditions of Service printed overleaf, available on request or accessible at [www.sgs.com/terms\\_and\\_conditions.htm](http://www.sgs.com/terms_and_conditions.htm) and for electronic formal documents, subject to Terms and Conditions for Electronic Documents at [www.sgs.com/terms\\_e-document.htm](http://www.sgs.com/terms_e-document.htm). Attention is drawn to the limitation of liability, indemnification and jurisdiction issues defined therein. Any holder of this document is advised that information contained hereon reflects the Company's findings at the time of its intervention only and within the limits of Client's instructions if any. The Company's sole responsibility is to its Client and this document does not exonerate parties to a transaction from exercising all their rights and obligations under the transaction documents. This document cannot be reproduced except in full, without prior written approval of the Company. Any unauthorized alteration, forgery or falsification of the content or appearance of this document is unlawful and offenders may be prosecuted to the fullest extent of the law.

SGS 台灣分公司  
台灣檢驗科技股份有限公司

No. 61, Ka-Fa Road, Nanzh Export Processing Zone, Kaohsiung, Taiwan /  
1 + 886 (07) 301 2121 f + 886 (07) 3010867

高雄南橋加工出口區開發路61號  
www.tw.sgs.com

Member of the SGS Group

## Test Report

No. : KC/2011/C0158 Date : 2011/12/27 Page : 3 of 3

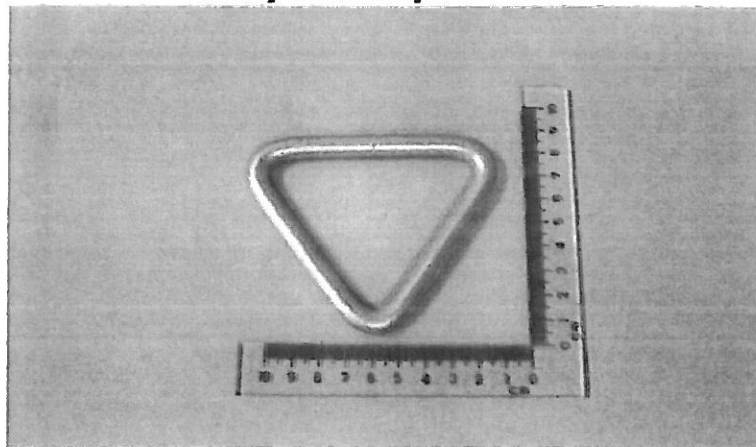
I-FUII ENTERPRISE CO., LTD.

NO. 59, LANE 202, SEC. 3, CHANG NAN ROAD, CHANG HUA CITY, TAIWAN (500)



\* The tested sample / part is marked by an arrow if it's shown on the photo. \*

### KC/2011/C0158



\*\* End of Report \*\*

Unless otherwise stated the results shown in this test report refer only to the sample(s) tested. This test report cannot be reproduced, except in full, without prior written permission of the Company. 除非另有說明，此報告結果僅對測試之樣品負責。本報告未經本公司書面許可，不可部分複製。  
This document is issued by the Company subject to its General Conditions of Service printed overleaf, available on request or accessible at [www.sgs.com/terms\\_and\\_conditions.htm](http://www.sgs.com/terms_and_conditions.htm) and, for electronic format documents, subject to Terms and Conditions for Electronic Documents at [www.sgs.com/terms\\_e-document.htm](http://www.sgs.com/terms_e-document.htm). Attention is drawn to the limitation of liability, indemnification and jurisdiction issues defined therein. Any holder of this document is advised that information contained hereon reflects the Company's findings at the time of its intervention only and within the limits of Client's instructions, if any. The Company's sole responsibility is to its Client and this document does not exonerate parties to a transaction from exercising all their rights and obligations under the transaction documents. This document cannot be reproduced except in full, without prior written approval of the Company. Any unauthorized alteration, forgery or falsification of the content or appearance of this document is unlawful and offenders may be prosecuted to the fullest extent of the law.